

TILMAN DT6814

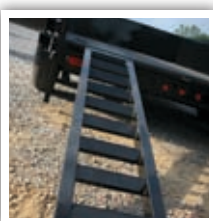
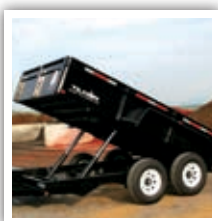
TANDEM AXLE



Description

The DT6814 Low Profile model dump trailer is constructed with an 8" tubular frame. This super heavy duty trailer is designed for the individual or company with very large payload requirements. With inside bed dimensions of 81.5" wide and 168" long, the DT6814 will easily accommodate construction/farm equipment and up to nearly 6 cubic yards of materials.

For more information please call us or visit our website.



- GVWR: 12,000 lbs or 14,000 lbs
- Bed size: 81.5" X 14'
- Volume: 5.9 cubic yards
- Dexter EZ lube axles
- Rubber mounted lights
- Radial tires
- 2-5/16" adjustable ball coupler
- 11 full-height stake pockets
- Slipper suspension

TECHNICAL DATA

Tilman DT6814 Tandem axle

TYPE	12,000 LBS GVWR	14,000 LBS GVWR
BED SIZE	81.5" x 14'	81.5" x 14'
GVWR	12000#	14000#
EMPTY WEIGHT	3900	3950
LOAD CAPACITY	8100	10,050
FRAME	8"	8" TUBULAR
DECK/SIDE GAUGE	10GA/12GA	10GA/12GA
SIDE HEIGHT	21"	21"
JACK	7K DROP LEG	7K DROP LEG
BALL SIZE	2-5/16" ADJUSTABLE	2-5/16" ADJUSTABLE
ELECTRICAL HOOKUP	7 WAY RV PLUG	7 WAY RV PLUG
CAPACITY(YDS)	5.9	5.9
DECK HEIGHT	27"	27"
TIRE and WHEEL SIZE	ST235/80R16E 16" WHEEL	ST235/80R16E 16" WHEEL
WHEEL BOLT PATTERN	8 ON 6.5"	8 ON 6.5"
CYLINDER	TWIN 3 1/2" TELESCOPIC	TWIN 3 1/2" TELESCOPIC
HYDRAULIC ACTION	SINGLE ACTING	SINGLE ACTING
AXLE CAPACITY/STYLE	2-6K STRAIGHT	2-7K STRAIGHT
ELECTRIC BRAKES	YES	YES
STANDARD TAILGATE	BARNDOOR COMBO	BARNDOOR COMBO
OPTIONS	12,000 LBS GVWR	14,000 LBS GVWR
BARNDOOR COMBO GATE	STANDARD	STANDARD
HEAVY-DUTY LANDSCAPE GATE	N/A	N/A
STABILIZER JACK STANDS	OPTIONAL	OPTIONAL
RAMPS	OPTIONAL	OPTIONAL
4" DROP AXLE	OPTIONAL	OPTIONAL
SPARE TIRE	OPTIONAL	OPTIONAL
SPARE TIRE MOUNT	OPTIONAL	OPTIONAL
TARP ROLLER KIT(W/TARP)	OPTIONAL	OPTIONAL
BATTERY	OPTIONAL	OPTIONAL
D-RINGS	OPTIONAL	OPTIONAL
COLOR	BLK \ R \ B \ G	BLK \ R \ B \ G

* Color codes: Blk = Black, R = Red, B = Blue, G = Green



Overview

The Tilman DT6814LP Dump Trailer (81.5" x 14') is designed to handle large, heavy loads with ease. With D-rings, optional pull out ramps and combo gate, this machine will effortlessly haul construction/farm equipment and material. The twin telescopic two-stage hydraulic cylinders provide the thrust and stability for dumping the maximum payload through the complete dump cycle.

Details

- 1 Twin telescopic two-stage cylinders
- 2 Pull out ramps
- 3 Lockable toolbox for small tool and battery protection
- 4 Hand control box (20' cord for dumping convenience)

